

KEYSTONE
ENGINEERING &
CONSULTING, INC.

166 Center Street Suite #210
Cape Canaveral, FL 32920
Phone: 321-454-7300
Fax: 321-459-2888

Progress Inspection Report #21 **Permit # 18BC03039**

Project Name: East Horizon
Project Address: 401 Highway A1A, Satellite

Progress Report thru 8-10-18
Inspection Visits: 8-6 thru 8-10-18

Prime Contractor: Chematics
Superintendent: Tim Lystlund

Activities in-progress: 401 building 04 stack corner balcony mark out and perimeter deck coat grinding; 01 and 04 side stack flood tests and surface profiling/skim coats; Unit 141 and 151 east-west PT splice and anchor install, formwork/reinforcing steel; 01 stack northeast corner shoring and column repairs

INSPECTORS REPORT

Keystone Engineering visited the site on 8-6 thru 8-10-18 and also had several conversations with the construction team by telephone throughout the week.

On the 401 building 04 balcony stack, scaffold was rigged and handrail removal has been completed. Safety lines were installed and areas were marked for repair Monday on the 04 stack balconies. Remaining deck coating perimeter grinding is now in-progress and excavations are scheduled to begin next week.

Flood tests and surface profiling/skim coats are currently in-progress on the 01 and 04 side stack balconies in order to minimize water ponding areas. On the Unit 141 and 151 balcony east elevation slab edges, post tension splice chuck and anchor head installations were completed and reinforcing steel placement/formwork was in-progress late in the week.

On the 01 balcony stack northeast corner, shoring was rigged on all floors in order complete column repairs. Excavations on the Unit 141 and 151 northeast corner columns were cast back Thursday and Friday, scheduled to continue on remaining 01 stack northeast corner columns next week.

James E. Emory, P.E.



View of areas marked for repair on the Unit 154 corner balcony east elevation



View of areas marked as likely topping repairs on the Unit 154 corner balcony south elevation



View of slab edge spall marked for repair on the Unit 144 corner balcony



View of slab edge spall marked for repair on the Unit 134 corner balcony



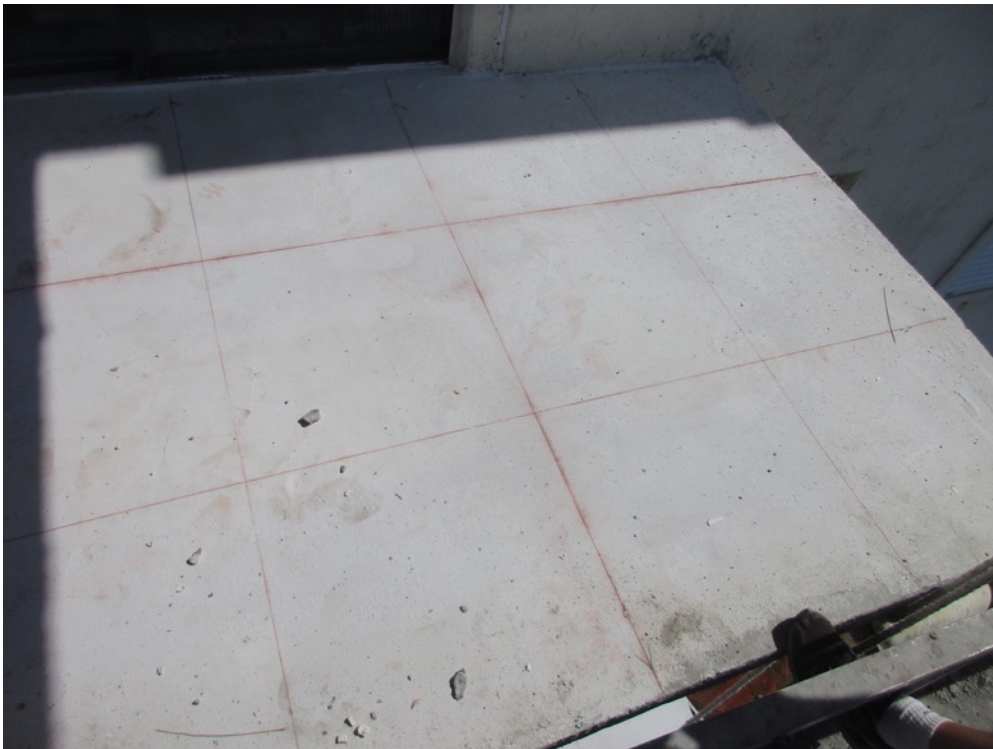
View of slab edge spall marked for repair on the Unit 114 corner balcony



View of edge spall marked for repair on the Unit 134 balcony



View of initial skim coat applied on the Unit 144 south side balcony



View of initial skim coat applied on the Unit 141 north side balcony